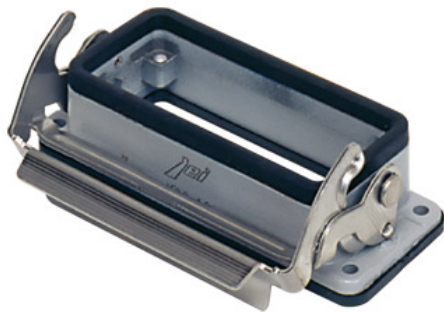


Part number



# JCVI 16 L



## Brief description:

bulkhead mounting housings with single lever, size "77.27", metal version, IP66

Product description	
Version	JEI@-V enclosures
Series	bulkhead mounting housings with 1 lever
Product type	with 1 lever in galvanised steel
Family	Enclosures JEI@ series, zinc plated levers
Size	size "77.27"
Technical data	
Material	metal
IP degree of protection	IP66 (and IP69K DIN 40050 - 9)
Further technical details	
Weight	151,00 g

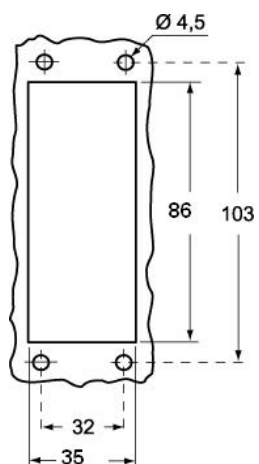
Approvals / Standards	
Quality mark	 (type:4/4X/12),  , EAC
Conformity	CQC, CE
General ordering information	
EAN13 code	8015747137607
Tariff number	85369095
Packaging Information	
Packaging length	320,00 mm
Packaging height	200,00 mm
Packaging width	160,00 mm
Packaging weight	3,10 kg
Packaging volume	10,24 dm <sup>3</sup>
Packaging description	Carton box
Packaging quantity	20 Pcs
Packaging EAN code	8015747143981
Sub-packaging weight	0,78 kg
Sub-packaging description	Plastic pakaging
Sub-packaging quantity	5 Pcs
Sub-packaging EAN barcode	8015747140133

Part number

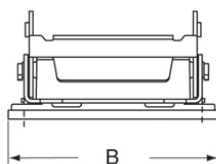
# JCVI 16 L



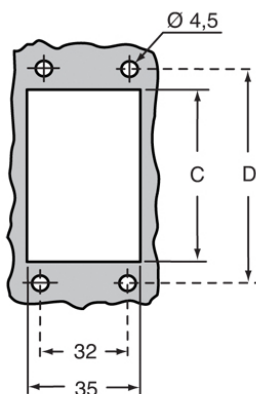
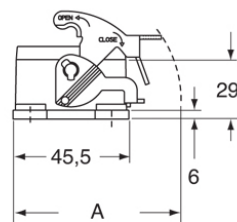
Catalogue drawings



JCVI L



Catalogue drawings



	A	B	C	D
JCVI 06 L	66	82,5	52	70
JCVI 10 L	70	95,5	65	83
JCVI 16 L	70	115,5	86	103
JCVI 24 L	70	142,5	112	130